



April
2025
..WHOLESALE..

CENTRAL MARYLAND
FLOWER CONNECTION



Welcome Florists...

We are so glad you're here! **Central Maryland Flower Connection** is made up of a group of specialty cut flower farms that came together to bring our locally grown flowers to our customers in Maryland and the DC area. Our clients told us again and again that it was difficult to get out to the farms to pick up their wholesale orders and needed centralized ordering and a delivery service to access local blooms. We heard you. Our goal is to streamline the ordering process for farm-direct flowers, providing weekly delivery and one-stop-shop ordering on the **Central Maryland Flower Connection** web site from all of our farms. We are all about connections, bringing together our strengths to provide the highest quality, locally grown flowers to the central Maryland and the DC area.

Get to know us.



Expect great quality. When Sabina (Condor Farm) drops off your blooms, you are meeting one of the growers! The advantage? Sabina understands what the freshly cut stems need to deliver in perfect condition.

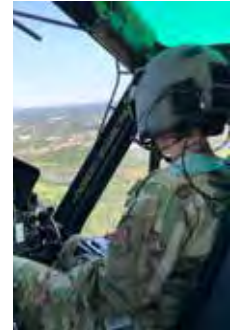
Lean on our expertise. We bring our combined knowledge to our customers by answering questions about individual varieties. Ask us about vase life, hydration, and conditioning suggestions for your order. In addition, we can recommend in-season substitutions. We love to talk local flowers!

Choose healthy & sustainable. The growers in the Connection value ecologically responsible flowers. We use pollinator-friendly, healthy soil management, and sustainable farming practices to produce our blooms and stems. We are all located in Central Maryland, this makes the carbon footprint of your floral delivery a LOT smaller!

Find in-season specialty items. We are all small specialty growers. Smaller scale farms are able to grow a larger variety of flowers. By catering to our florists we choose selective crop plans to include; unique varieties of Tulips, a wider selection of uncommon colors of Dahlia and hard to find items like Amaryllis, Sweet Peas, Cosmos, or Agrostemma. Our growers have great choices that you will not find at the wholesaler.



Meet Our Growers



Condor Farm

Sabina Shaub

Sabina owns and operates Condor Farm located in Upper Marlboro, Maryland, together with the help of her brother, husband, and father, all military veterans, as well as her 7 year old son. Sabina applies her career experience; from architect, to military helicopter pilot, to establishing her farm in 2022. On 10 acres of pasture, woods, and fields, Condor Farm operates by using healthy soil management through rotational grazing, silvopasture, cover cropping, composting, and no-till planting methods. They have a “fled” (flock + herd) of sheep and alpacas for fertilizer and fine wool products, a newly planted hazelnut orchard, and rows of annual, perennial, and woody stem cut flowers, both in the field and a high tunnel. In her eyes, locally grown, fresh cut flowers are a perfect medium to not only experiment in agricultural techniques and practices, but also to use her organizational know-how to provide locally and sustainably grown products to customers and professional florists throughout central Maryland and the DC area.



Zang's Farm

Sarah Hultz

Sarah comes from a multi-generational farming family, started back in the early 1980's by Sarah's grandparents, Laura and Billy Zang. The farm has evolved so much throughout the years from corn, melons, and tomatoes to “Zang's Famous Peaches”. Sarah's grandmother, Laura Zang always enjoyed planting flowers in the summer. After college, Sarah, decided to continue the tradition of evolving the family farm by specializing in field grown cut flowers. She has expanded Zang's cut flower offering by adding over 20 different varieties, including the top favorites; Ranunculus, Peony, and Dahlias. Sarah has a passion for keeping multi-generational farms in our area thriving. She believes when you choose a local family farming business, like Zang's you tap into generations of farming knowledge specific to our area to provide central Maryland and the DC area floral customers with the highest quality locally grown options.



Fairytale Farmette

Kelly Weisner

Before she envisioned Fairytale Farmette, Kelly began as a sustainable homesteader and a graphic designer in Washington, DC. A move to Davidsonville, MD expanded her homestead. Further expansion from her tiny homestead to lease the farmland across the street in 2018, Fairytale Farmette became a full service cut flower farm. Cut flowers provide the perfect confluence of farming and design. Kelly uses her design sensibility to grow a curated collection of Dahlia varieties, experimental natives varieties, and design-forward colors and textures of annuals and bi-annuals. Kelly loves to chat with her customers to include on-trend offerings for the coming season. With a focus on creating pollinator habitats, Fairytale Farmette uses biological pest control methods that are beneficial insect and pollinator-friendly. Happily ever after for Kelly is connecting local floral buyers and business, to unique flower variety selections.



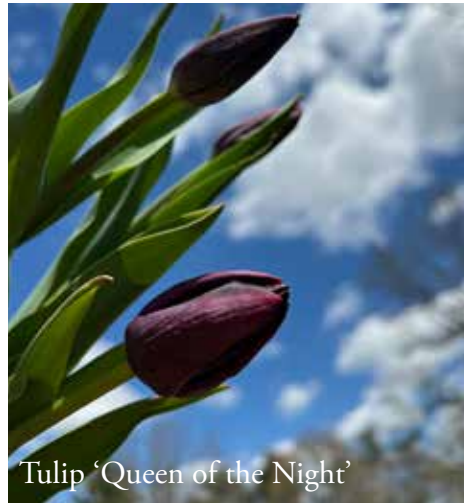
Red Chimney Flower Farm

Suzanne Montie

Suzanne and her family own a 6-acre farm in Bowie which they acquired in 1974. Beginning in the local farmer's markets, Suzanne has transitioned to CSA subscriptions, DIY buckets of flowers for event work and selling her selection of unique and in-demand stems to local florists. She operates 3 high tunnel hoop houses throughout the year to provide locally grown "season extending" crops such as her highly coveted Eucalyptus and Ranunculus. Suzanne specializes in peonies in the spring, field cut varieties during the summer and dahlias in the fall. She stays current with cut flower trends as a member of the ASCFG (a National Organization of Cut Flower growers) and also The Maryland Cut Flower Growers. Through her contacts with other growers in the area, she has been able to share knowledge and expertise, all with the aim of bringing sustainable, locally grown, freshly cut flowers to the community.

What's in season...April

In order to help you to plan sourcing for the coming season here are the varieties we expect to have available. We may also have additional items available from time to time so please consult the online database for availability.



..Tulip

Price range \$1.30-\$1.80/stem
Sold in bunches of 10

Single/Large Cup

'Apricot Emperor' *Fosteriana* elongated, and apricot-peach with salmon-pink hints and green markings.

'Cream Flag' *Single cup* cream with mottle specks of pink

'Delta Storm' *Single cup*, tangerine orange.



'Green Power' *Unique green petaled variety.*

'Greenland' *Soft pink and cream with a green highlight.*

'Hakuun' *Single cup, Darwin style in white with a green streak.*

'Impression Mix' *Single cup, Darwin style in red pink and soft orange*

'Jacuzzi' *Single cup* shades of lavender.

'Silver Cloud' *Single cup* grey violet.

'Strong Gold' *Single cup* early, yellow.

'Strong Love' *Single* early, classic lipstick red.

'Sweet Flag' *Single cup* white with lavender highlight.

'Wedding Dress' *Single cup, Darwin style* in white with a slight creme blush.

Peony Petal/Doubles

'Allison Bradley' *Double* early, wine.

'Avant Garde' *Double* early, Always the first to bloom, light buttercream lemon double tulip.

'Brisbane' *Peony* petal fringe red, yellow through to orange, cream and raspberry-pink

'Columbus' *Double* early, cherry pink/magenta pink with white tips.

'Copper Image' *Peony* petal style, Soft orangey-rose (copper).

'Double Gudoshnik' *Peony* petal style, in variegated warm color scheme, ranging from buttery yellow to coral and raspberry.

'Double Negrita' *Peony* petal style, in dark purple to raspberry shades.

'Dreamer' *Double* early blush pink.

'Drumline' Peony petal style, deep candy apple-red petals with feathery white edges.

'Exotic Emperor' Peony petal white with creamy center and green highlights.

'Foxtrot' Peony petal style, in range of pink shades from light to deep rose with white highlights.

'Foxy Foxtrot' Peony petal style, in yellow, apricot, and peach tones.

'La Belle Epoque' Peony petal style, pale apricot to a creamy caramel and the outer petals are brushed with a deep, dusky rose.

'Limousine' Double early lemonade yellow.

'Marie Jo' Peony petal style, bright yellow.

'Miranda' Peony petal style, with vibrant red petals and a delicate lemon yellow base.

'Verona Sunrise & Valdivia' Double early, orange/gold.

Lily Petals

'Elegant Lady' Lily Flowering, creamy yellow with violet margins.

'White Triumphator' Lily Flowering, pure white.

'White Liberstar' Coronet-type "crown", pure white.

Parrot

'Silver Parrot' Parrot, silvery pink that opens to ruffled and fringed dark pink.

'Blushing Parrot' Parrot, cream-colored with touches of blush pink at the petal edge.

French style single cup

'Menton' French style, large soft pink cups.

'Queen of Night' French style, large dark eggplant (almost black).

'Sky High Scarlet' French style, large bright red.

'Stunning Apricot' French style, large apricot.





Hellebore

..Narcissus

(Daffodils and Jonquils)
 Price range \$1.00-\$1.25/stem
 Sold in bunches of 10

Doubles

Bridal Crown
Highly scented multiple, creamy-white blooms with saffron-yellow cup segments

Delnashaugh
 double, apricot and white

Erlicheer
Sweetly scented, double-flowered, creamy white petals that resemble miniature gardenias, and blooms in clusters of small flowers on each stem.

Extravaganza
 double, white and tangerine

Gay Tabor
Highly scented large, double, ivory blooms with golden-orange accents.

Queens Day
 double, yellow

White Lion
 double, white

Replete
Highly scented large, double, full blooms with ruffled, coral-pink and white petals.



Sir Winston Churchill
double mini, highly fragrant, white with tangerine

Tahiti
Large, double, rich gold and glowing orange in an almost rose-like bloom.

Yellow cheerfulness
double mini butter yellow

Single/Large Cup

Accent
white with apricot, large cupped

Mt Hood
large, pure white blooms that open with a pale yellow trumpet.

Orangery
 split cup, bright yellow/mango

Pink charm
white with pink, large cupped

Popeye-double
white/yellow, fragrant



Anemone Mix

..Anemone

Price range \$1.90/stem
 Sold in bunches of 10

Carmel
 mix (white, purple, red, pink)

Galilee
 mix (white, purple, red, pink)

Meron
 Mix(white, purple, red, pink)

Mistral
Azzuro (light blue/lavender), Grape (grape purple), Rarity (white/blush with black center), the edge (light pink/rose with white)

Levante
 mix, these have RUFFLED petals in the center

..Ranunculus

Price range \$2.00-\$3.00/stem
 Sold in bunches of 10

Amandine
 mix (pink, white, yellow purple, red, orange)

La Belle
mix (pink, white, yellow, purple, red,
orange)

Super Green
mixed colors with funky green center

Butterfly
these are a **BUNCHIING** variety with
delicate blossoms. Ariadne (baby pink),
Graces (creamy white w/ limelyellow
centers) Thiva (purple, lilac)

Elegance
pastel mix (salmons, corals, peaches),
Malva (purple), Giallo(gold) Salmone
(salmon), Bianco (white)



Ranunculus Mix



Tulip 'Miranda'

..Misc.

Fruit Tree Blossoms
Peach, pink blossoms with magenta or
pink blush near the center.
Pear, pure white, five-petaled blossoms.

Price range \$0,95-\$1.25/ stem
Sold in bunches of 10

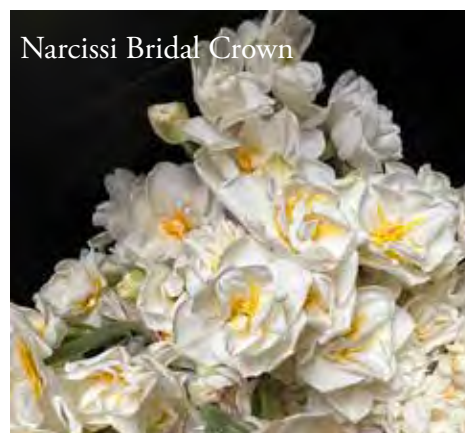
Hellebores
Various shades and varieties from dark
eggplant to white cup-shaped flowers.

Price range \$2.00/ stem
Sold in bunches of 10

Leucojum /Giant Snow Drops
Pendant, white, bell-shaped flowers,
often with green or yellow markings on
bright green stems.



Pear Blossoms



Narcissi Bridal Crown

Price range \$2.00/ stem
Sold in bunches of 10

Pieris
Attractive foliage with showy white
cascading flower panicles.

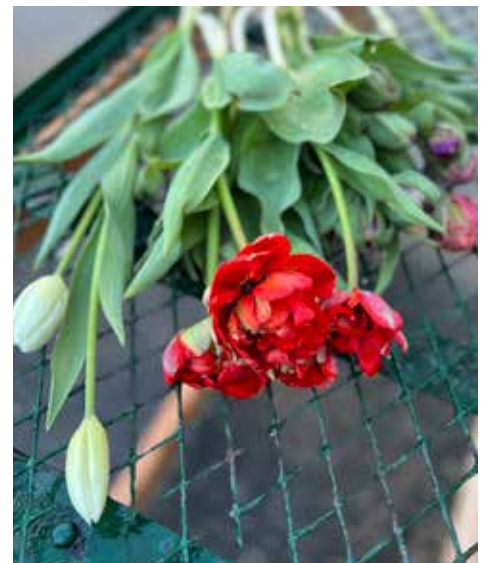
Price range \$1.25/ stem
Sold in bunches of 10

..Growers Choice Bucket

“Farmers Choice” bucket
is a curated collection of blooms
based on what is in season for that
week. These are often our favorite
flowers and foliage that would
make a timeless arrangement,
centerpiece, grazing table, or a
last-minute floral offering.

We will do our best to accommodate
specific colors, but we cannot guarantee.
At check out, please list any specific
colors to include (or not include).

**Each bucket includes approximately
60 stems. (\$75 total)**



Policies & FAQs



Policies

- ⇒ We offer flowers to florists and designers only. To order, you must provide your EIN #.
- ⇒ There is no order minimum for delivery.
- ⇒ We only deliver within central Maryland and areas of DC.
- ⇒ All buyers must supply their own buckets. A 5\$ charge per bucket will be added to your invoice for the use of our buckets.
- ⇒ Payment will be charged once your flowers are delivered.
- ⇒ Once your order is received, please inspect your order upon reception and contact us immediately if an item is defective, damaged, or if you received the wrong item so that we can evaluate the issue and make it right.
- ⇒ Returns are not excepted on live products. If you are not satisfied with an item, please reach out to us immediately.
- ⇒ Our availability list is dynamic, and items may be added or changed throughout the week.
- ⇒ Because we are a local flower collective, there is a risk that our anticipated weekly inventory could change after harvesting. If items in your order are unavailable, we will notify you of any changes and do our best to offer an adequate substitution.

FAQs

How do I order?

Orders can be placed online through our webstore using a password. Availability of flowers is posted a week prior to delivery. The list is posted on the website every MONDAY at 12 noon. You have until THURSDAY at 12 noon to place your order. Delivery is the following Wednesday.

What does the service fee cover?

The service fee allows us growers to function more efficiently on the administration aspects of our Flower Collective. It covers the convenience of online ordering, real-time availability updates, fresher product delivery, and one on one support as needed.

When is the delivery?

We deliver flowers every **WEDNESDAY** from **8:30 am-1:30 pm**.

Where do you deliver and what is the delivery charge?

\$25: 301/50 corridor (Upper Marlboro, Bowie, Gambrills, Davidsonville)

\$30: Annapolis (east of Davidsonville)

\$35: DC, Takoma Park, Hyattsville, College Park

Can I pick up my order?

At this time, we are not offering pick-up.

FAQs cont.

What payment methods do you accept?

All online orders will accept the following payment methods: all major credit cards and Shopify.

What if I want to change my order or I forgot to add a item to my cart?

Once your order is received, we are unable to make changes, modify or change the method of payment. If you have forgotten to order something, you must place an additional order. If placing an additional order for the same delivery location and date, we will only charge one delivery fee.

What if I am not satisfied with my flowers or they arrive damaged?

If your flowers arrive damaged, you must provide photos of the flowers within 24 hours of receiving your order so we can properly assess their condition. Once we review this information, we will reach out to you by email or phone.

What do I do once my flowers are delivered or picked up?

The flowers we harvest are pre-conditioned in water and a floral cooler for at minimum of 24 hours. Your flowers will be delivered on a refrigerated truck. You are responsible for the care of your flowers once delivered and providing the appropriate number of buckets. If you are not available in person to receive your delivery, you must leave buckets out for us to transfer your flowers in and a sheltered/safe place to store them. If there are specific parking/delivery instructions, please notify us by leaving a note at check out.

I am interested in purchasing your flowers, but I am not a florist or a designer.

We are happy to help you! Each of our farms do sell at various locations including farmers markets, pop-up events, CSA subscriptions, and special orders. You can visit our individual Facebook/website pages below:

Fairytales Farmette: <https://www.fairytalesfarmette.com/>

Condor Farms: <https://www.belairblossomsflowerfarm.com/>

Zangs Farm: <https://www.zangsfarm.com/>

What is a Farmers' Choice Bucket?

Our "Farmers Choice" bucket is a curated collection of blooms based on what is in season for that week. These are often our favorite flowers and foliage that would make a timeless arrangement, centerpiece, grazing table, or a last-minute floral offering. We will do our best to accommodate specific colors, but we cannot guarantee. At check out, please list any specific colors to include (or not include).

Each bucket includes approximately 60 stems. (\$75 total)

What is a "Restaurant DIY Bucket"?

Our "Restaurant DIY" Bucket is a great option for decorating your dining area or event space. No need to have any design expertise, we will provide you with flowers that are easy to work with. This collection of blooms will include seasonal flowers and foliage to fit the design of your space. You will need to provide your own bucket to store the flowers in, clippers to design with, and vases. We will do our best to accommodate specific colors, but we cannot guarantee. At check out, please list any specific colors to include (or not include).

This bucket includes approximately 45 stems (\$60 total). Let us help you determine how many buckets you may need by emailing us your number of tables, vase type, etc.



In Season by month 2025

CENTRAL MARYLAND
FLOWER CONNECTION

..Early Spring

March/April

Fruit Tree Blossoms
Peach, Pear

Hellebores

Leucojum /Giant Snow Drops

Narcissus (Tulips and Jonquils)

Pieris

Tulips
French, Peony-petal, Parrot

..Late Spring

May/June

Agrostemma

Allium
Purple Sensation, Drumstick

Ammobium

Anemone

Baptistia

Bells of Ireland

Burpleurum

Campanula

Camellia
Foliage

Centurea/Bachelor Buttons

Columbine

Cynoglossum/Chinese Forget Me Not

Daucus

Dames Rocket

Delphinium

Dianthus/Sweet William

Dutch Iris

Digitalis/Foxglove

Euphorbia

Feverfew/ Matricaria

German Iris

Godetia

Kale

Larkspur

Lilac

Lupine

Orinthogalum/(Star of Bethlehem)

Nigella

Peony

Peppergrass and Orlaya

Poppies

Ranunculus

Scabiosa

Snapdragons

Stock

Sweet Pea Vines

..Early Summer

June/July

Ageratum

Ammi/Dara

Astilbe

Basil

Camellia
Foliage



Carnation

Cerithe

Cosmos

Echinacea / Coneflower

Hydrangea

Hypericum

Lisianthus

Marigold

Penstemmon

Rudbeckia

Shiso

Statice

Sunflower

Veronica

Yarrow

Zinnia



..Late Summer

August/ September

Aclepias/Milkweed

Ageratum

Amaranth

Camellia
Foliage

Celosia

Cosmos

Dahlia

Dusty Miller

Echinacea / Coneflower

Echinops

Eucalyptus

Gompherena

Grasses



Helipterum/Paper Daisy

Lisianthus

Mahogany Splendor Hibiscus Leaf

Marigold

Penstemmon

Strawflower

Sunflower

Veronica

Yarrow

Zinnia

..Autumn

October

Aclepias/Milkweed

Ageratum

Amaranth

Camellia



Foliage

Chrysanthamum

Celosia

Dahlia

Dusty Miller

Eucalyptus

Gompherena

Grasses

Helipterum/Paper Daisy

Hypericum

Lisianthus

Mahogany Splendor/Hibiscus Leaf

Marigold

Snapdragons

Strawflower

Sunflower

Zinnia

Kale



Early November

Amaranth

Chrysanthamum

Dahlia

Eucalyptus

Grasses

Sunflower

Zinnia

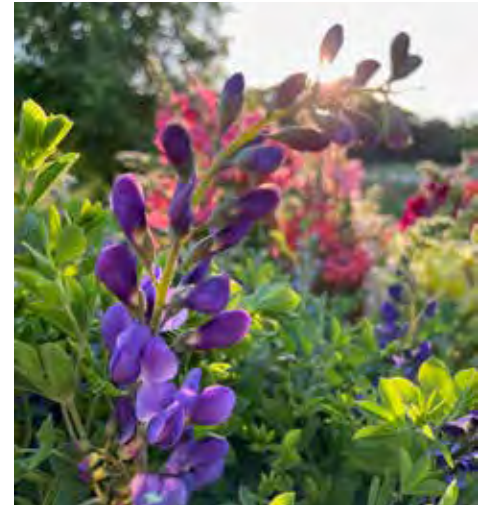
Kale

..Holiday

Late November/ December

Amaryllis

Dried Flowers



Euclyptus

Hot House Tulips

Magnolia Leaves

Holly

Juniper

Yew

..Winter

Amaryllis

Dried Flowers

Hot House Tulips

Magnolia Leaves

